



NOBA : COMPACT BASS CABINETS



- ▶ Innovative & unique design
- ▶ Countless mounting options
- ▶ Integrated class-D amplifier
- ▶ WaveDynamics™ technology

## *When design meets sound*

NOBA is characterized by an innovative & unique design. With its curved shape, made of 4 mm thick aircraft graded aluminum and its extremely powerful 8" woofer of 300 Watts, the NOBA is able to deliver an unheard low frequency response for its small woofer size.

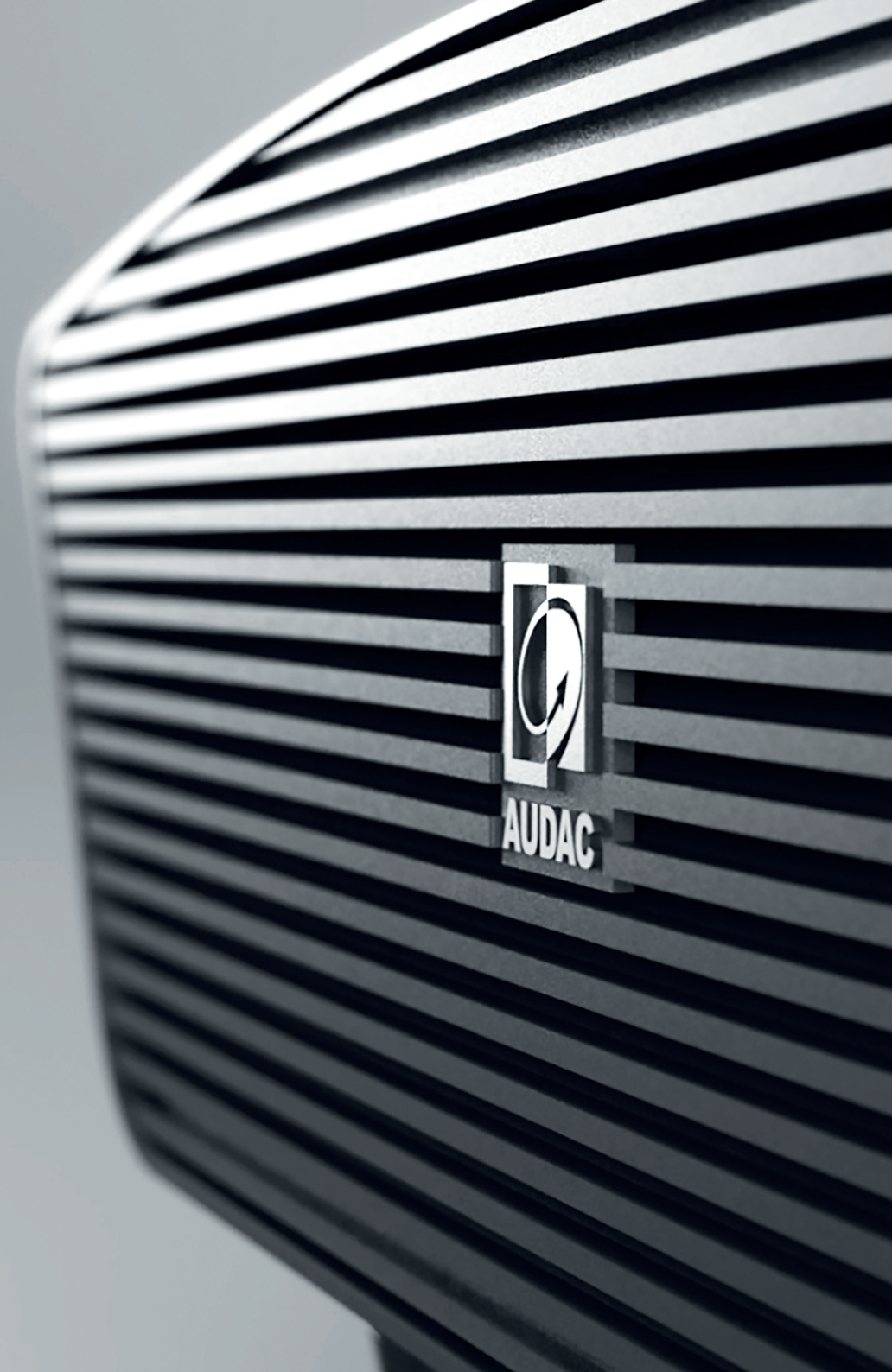
The perfect acoustic experience is guaranteed when the entire audio frequency spectrum is equally distributed. The slick look of the NOBA allows it to be placed against a wall, on the ceiling or even underneath furniture, yet due to the unique composition of its parts, NOBA ensures a much better spreading of sound waves than other similar cabinets. NOBA's integrated class-D amplifier provides an impressive clarity of 150 Watts for both of the top speaker outputs to ensure impeccable sound division.

The brand new bass cabinet uses AUDAC's WaveDynamics™ technology, which allows the user to easily set up the optimal acoustic configuration. The user can simply load its preferred audio settings through NOBA's integrated USB input.

## WaveDynamics™

A complete library of set solution presets is available for your projects, making it as easy as picking the right file, loading it & play! Besides the optimal acoustic configurations, this library also includes the loudspeaker performance parameters providing a bulletproof protection for your audio system.

For specific projects, custom WaveDynamic™ configurations can be made using the AUDAC System manager.





- ① WaveDynamics™ DSP and loudspeaker management
- ② 600 Watts Class-D Power amplifier
- ③ USB connection for preset loading & control
- ④ Satellite amplifier for set solutions (2.1)
- ⑤ Software configurable standby function (energy-star)
- ⑥ Wide operation range switch mode power supply with power factor correction



Limiter



Digital  
Audio Filters



Speaker  
Protection



Dynamic  
Bass



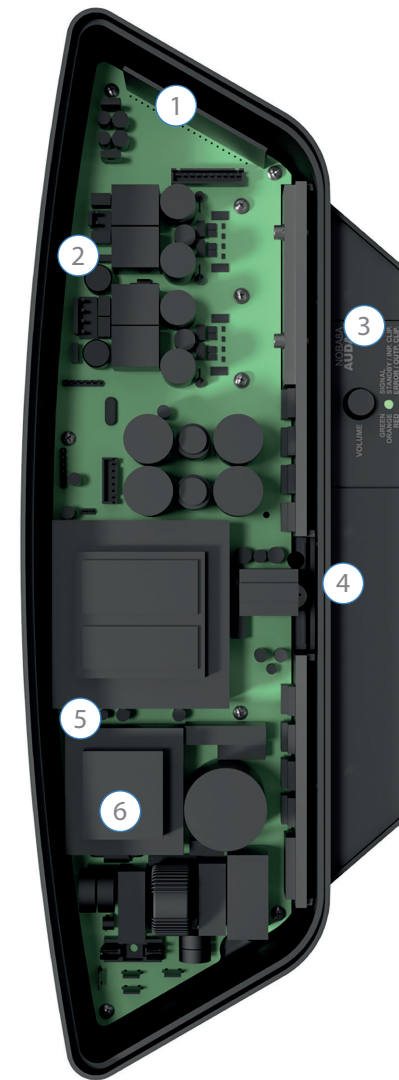
Speaker  
Presets



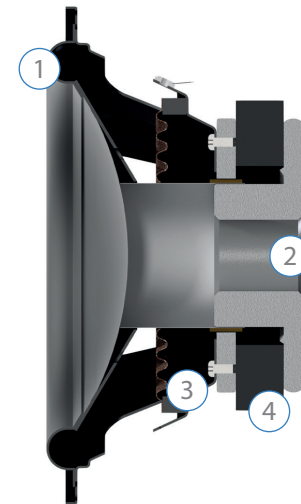
Energy  
Efficiency



System  
Manager



- ① Low loss & low temperature dependency suspension
- ② 2.4" voice coil for high power handling
- ③ Impressive motor strength and accurate displacements due to large magnet size
- ④ High excursion capability



## Countless mounting options

The unique design, with its curved shape and slick look of the NOBA allows it to be placed against a wall, on the ceiling or even underneath furniture.

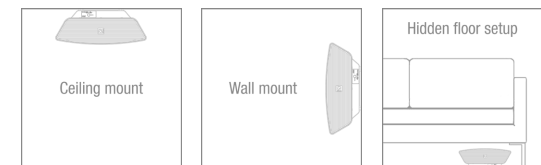
The optional wall or ceiling mount bracket provides a great ease for installing the NOBA in one good-looking entity.

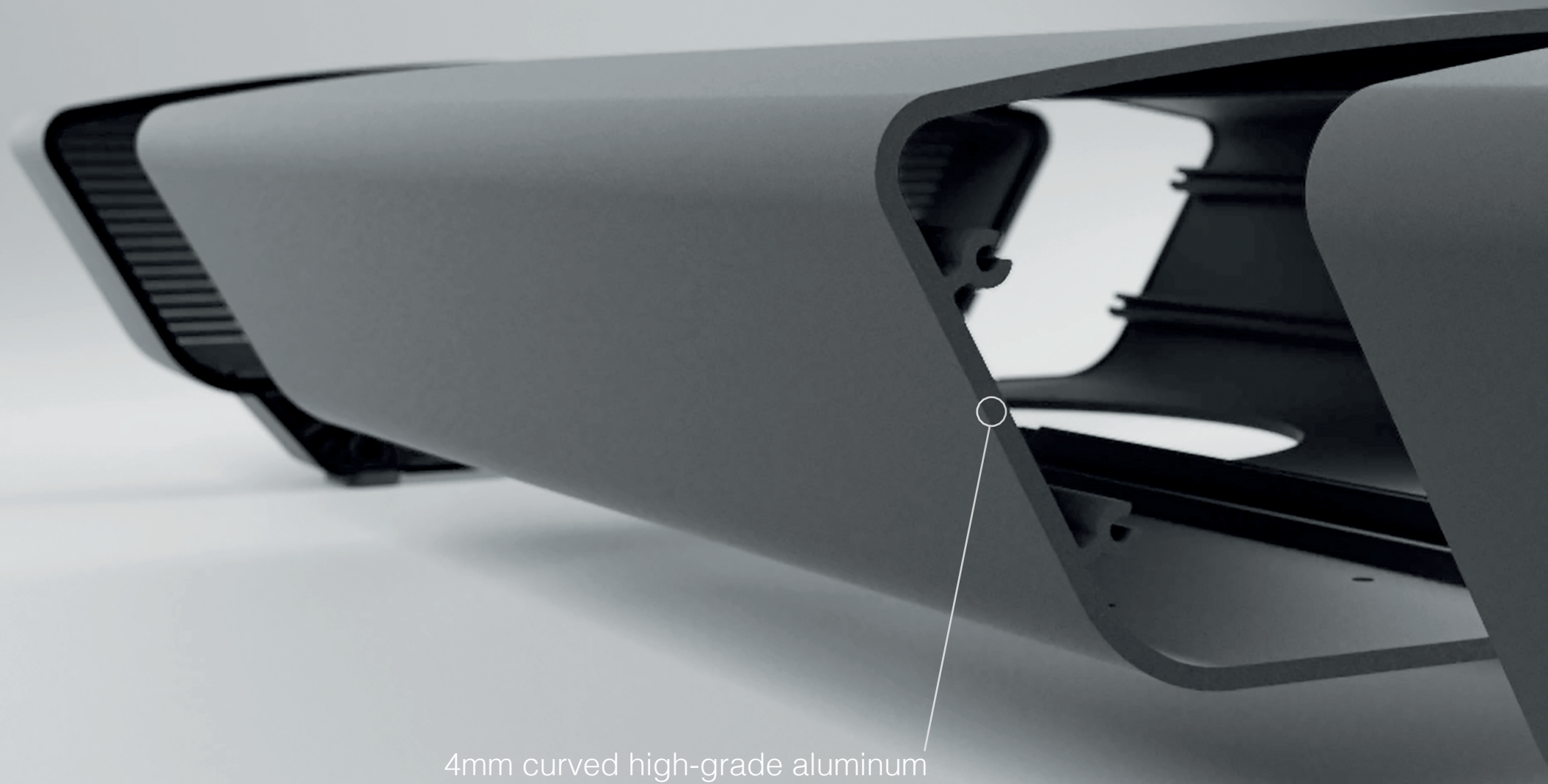


### MBK410C

Optional ceiling mount bracket

Available colours:  

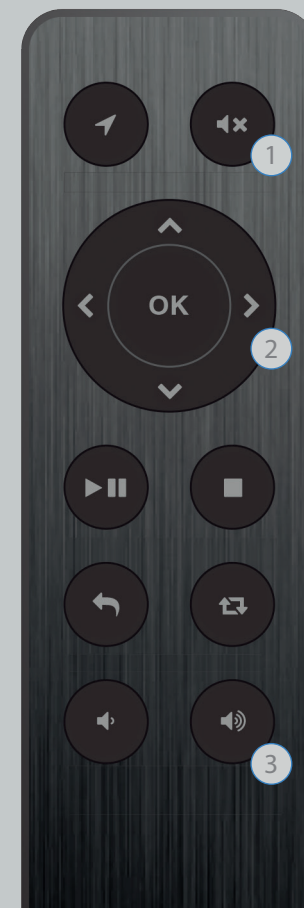


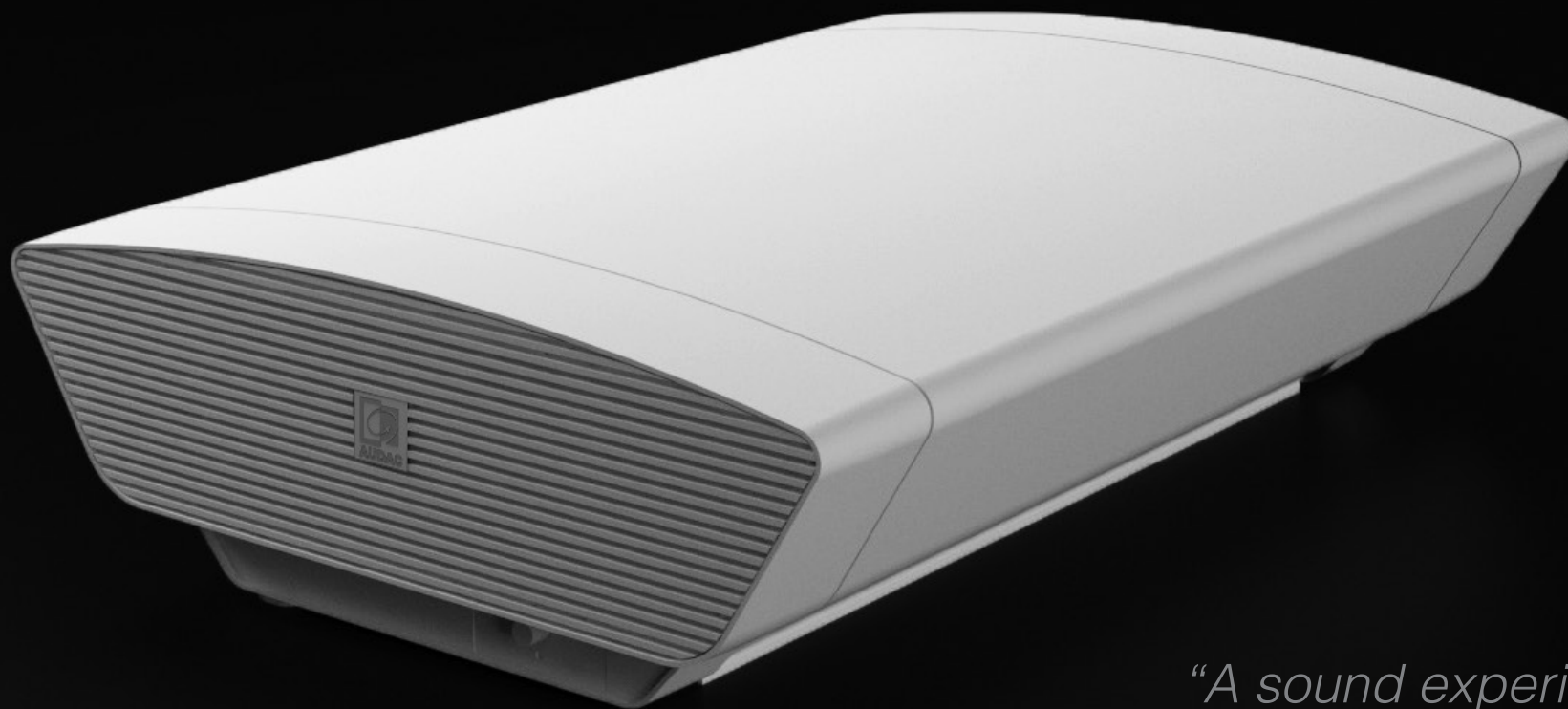




Full controllability  
from the tip of your finger

- ① Mute switch
- ② Audio balance control
- ③ Volume control

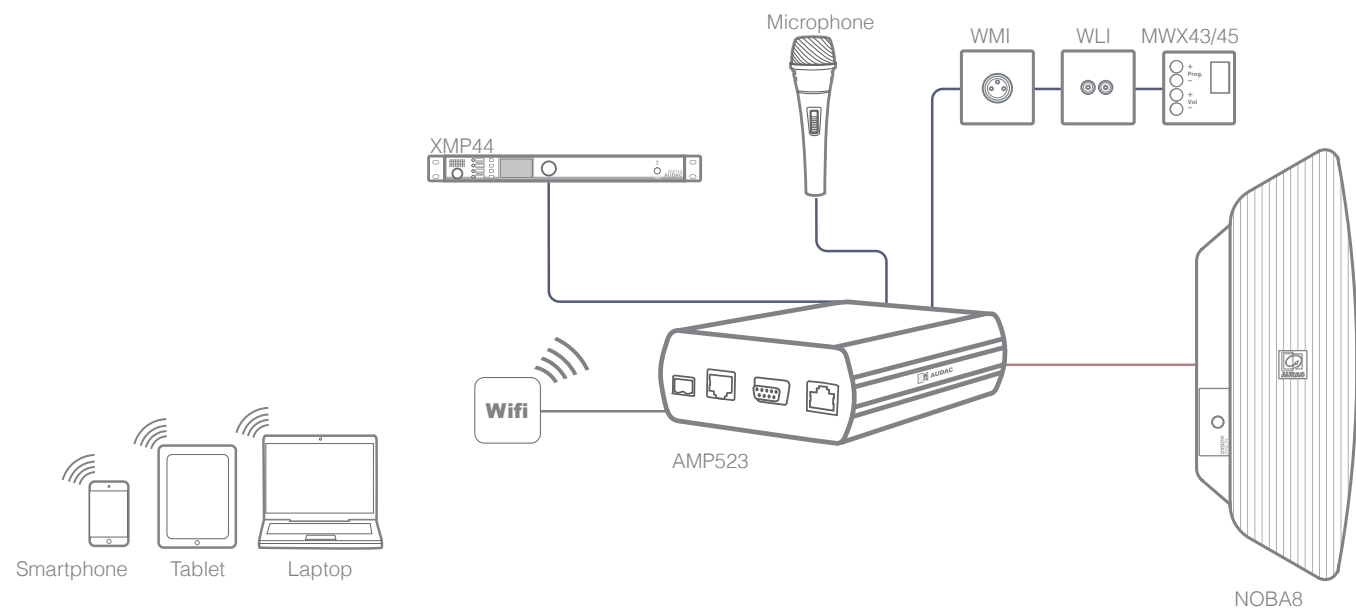




*"A sound experience  
you won't hide."*

## Get even more out of the NOBA solutions

All great NOBA solutions are available in a + version, these are accompanied with a AMP523MKII module. This extra module will increase the amount of inputs for the audio system and open new control possibilities. Advanced remote control over the system is now possible while using any computer browser or applying the freely available AUDAC Touch™ application for smart devices. While optional wall panels can increase the existing microphone and 4 line inputs to an extra line or microphone input or a control panel can select the desired audio source and volume.



## SONA series

### On-wall / On-ceiling solutions

The SONA series provides a stunning and elegant design whilst delivering a sound experience that will leave its listeners stunned. Thanks to the combination of the extremely compact ATEO loudspeakers and the powerful NOBA bass cabinet of only 149mm thick, a perfect balance between sound clarity and power can be attained. A perfect acoustical match is accomplished by the WaveDynamics™ technology which also provides a bulletproof protection for your audio system.



More SONA solutions :

- **SONA2.5**  
4 x ATEO2 8Ω, 1 x NOBA8A
- **SONA2.9**  
8 x ATEO2D 16Ω, 1 x NOBA8A
- **SONA4.3**  
2 x ATEO4, 1 x NOBA8A
- **SONA4.5**  
4 x ATEO4, 1 x NOBA8A



### SONA2.3

2 x ATEO2, 1 x NOBA8A

Available colours:  











# SENSO series

## In-ceiling solutions

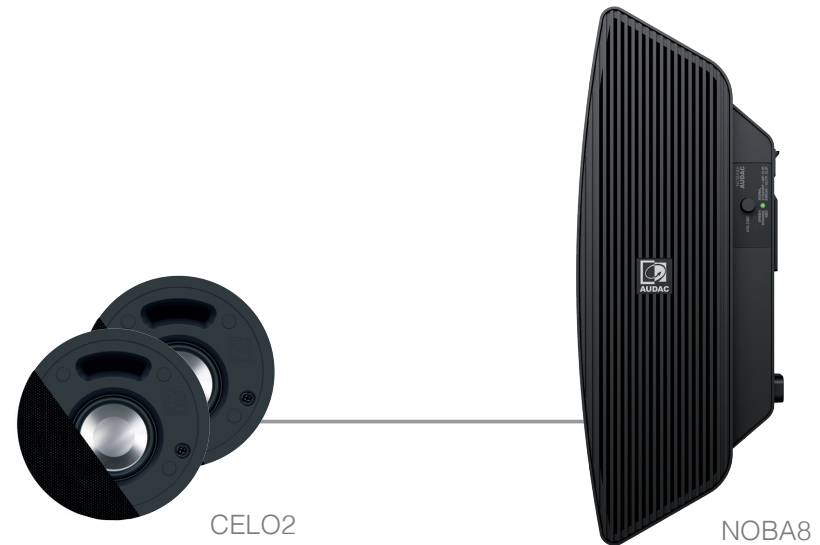
Sometimes a larger size speaker doesn't fit the interior design. Normally you would have to choose a smaller speaker solution that does not have the right capacity to fill an entire room.

By choosing the SENSO solution you receive the best of both worlds. The ultra-compact size of the CELO2 lets them smoothly integrate into any interior, combined with the stealth design and rich sound of the powerful 8" NOBA8 bass cabinet, this solution will assure you a sound distribution that is unheard of.



More SENSO solutions :

- [SENSO2.5](#)  
4 x CELO2 8Ω, 1 x NOBA8A
- [SENSO2.9](#)  
8 x CELO2D 16Ω, 1 x NOBA8A



### SENSO2.3

2 x CELO2 8Ω, 1 x NOBA8A

Available colours: /B /W

## CONGRESS series

### Solutions with column speakers

Having a high speech intelligibility is crucial in an educational environment. But nowadays playback of high quality media has also become a necessity in order to have your students experience the entire essence of your message. An excellent audibility of speech in acoustically difficult environments can easily be achieved with the KYDO column loudspeakers. When combined with the warm low frequencies the NOBA bass cabinet delivers, a true-to-nature reproduction of music and speech is acquired. A perfect acoustical match is accomplished by the WaveDynamics™ technology which also provides a bulletproof protection for your audio system.



More CONGRESS solutions :

- [CONGRESS4.3](#)  
2 x AXIR, 1 x NOBA8A



### CONGRESS1.3

2 x KYDO, 1 x NOBA8A

Available colours:  









## CERRA series

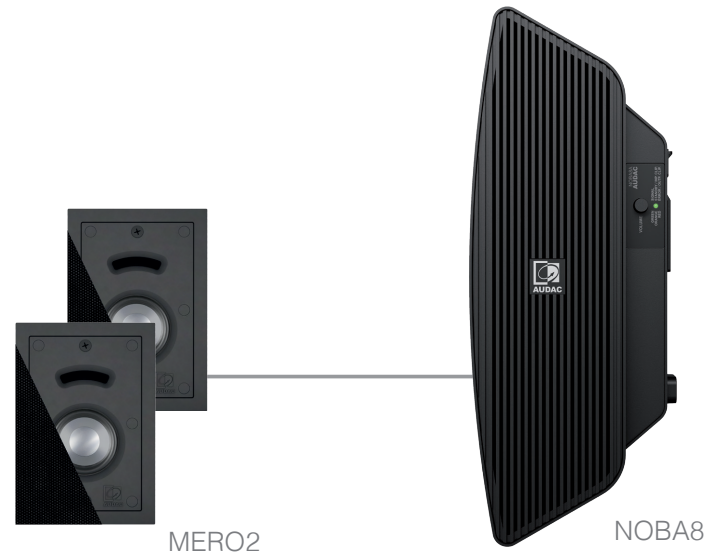
### In-wall solutions

Are you looking for a real breathtaking sound immersion? The NOBA has a height of only 149 mm and can be installed right underneath your lounge. Together with the MERO build-in wall speakers, this custom setup delivers an unsurpassed sound experience. A smooth integration into any interior thanks to the SlimLine™ grill that establishes the elegant look of the MERO in-wall speakers. A perfect acoustical match is accomplished by the WaveDynamics™ technology which also provides a bulletproof protection for your audio system.



More CERRA solutions :

- [CERRA2.5](#)  
4 x MERO2 8Ω, 1 x NOBA8A
- [CERRA2.9](#)  
8 x MERO2D 16Ω, 1 x NOBA8A



### CERRA2.3

2x MERO2, 1 x NOBA8A

Available colours:  



### Digital Matrix Systems

With innovation at the base of AUDAC's development, the brand offers comprehensive, expandable and powerful solutions for nearly every situation.



### Amplifiers

AUDAC offers a wide range of digital multi-channel amplifiers for single and multi-zone systems.



### Speakers

With more than 80 loudspeaker models, AUDAC proves that it can offer you the most accurate solution for your installation.



### Microphones

From the most robust hand-held or headset microphones to advanced paging systems, AUDAC provides you with the extension for your voice.



### Audio Sources

AUDAC pays great attention to its multimedia sources. The development of cutting edge digital audio technology has led to a complete range of sources that will inspire you!

Looking for advice? Or a custom audio solution?

Contact [info@audac.eu](mailto:info@audac.eu)

YOUR AUDAC PARTNER

V1.0