



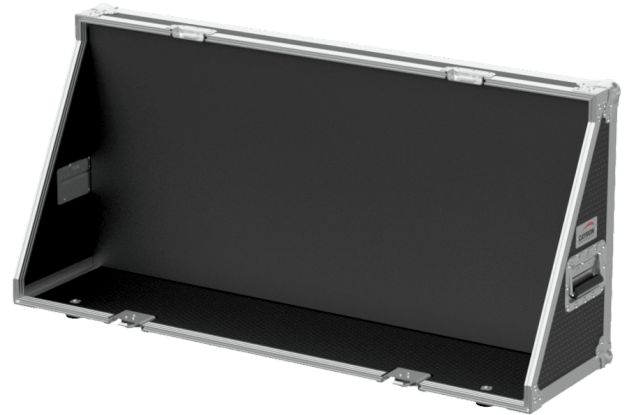
PROMO5322

Demo flightcase for surface mount loudspeakers

Product information:

This portable display lets you present the AUDAC surface mount loudspeakers in the most unique & convenient way possible to your customers.

Not only is it easy to install, it also proves perfect for on-the-road seminars and presentations. 2 x speakON connectors are integrated in the specially designed CAYMON flightcase so installation and setup on location are quick and effortless. For the installation of the IMEO1, additional powerCON TRUE1 and XLR connectors are provided as well.



System specifications:

Connectors	Input	1 x PowerCON TRUE1 to IEC C7 connector
		1 x XLR to 3,5mm jack
		2 x SpeakON 4P with 2x RZ15 cable built-in

Product Features:

Dimensions	45.039 x 21.42 x 16.54 " (W x H x D) (With ball corners)
	43.35 x 19.72 x 14.84 " (W x H x D) (Internal dimensions)
	43.11 x 19.094 " (W x H) (Backplate)
Construction	0.35 " high-quality plywood
Finish	ProShield™ top layer
Handles	4 x Medium heavy-duty (Penn Elcom H7154Z)
Latches	4 x Medium MOL™ (Penn Elcom L907/928/10)